

# Metal Stud Crete<sup>®</sup> Composite System

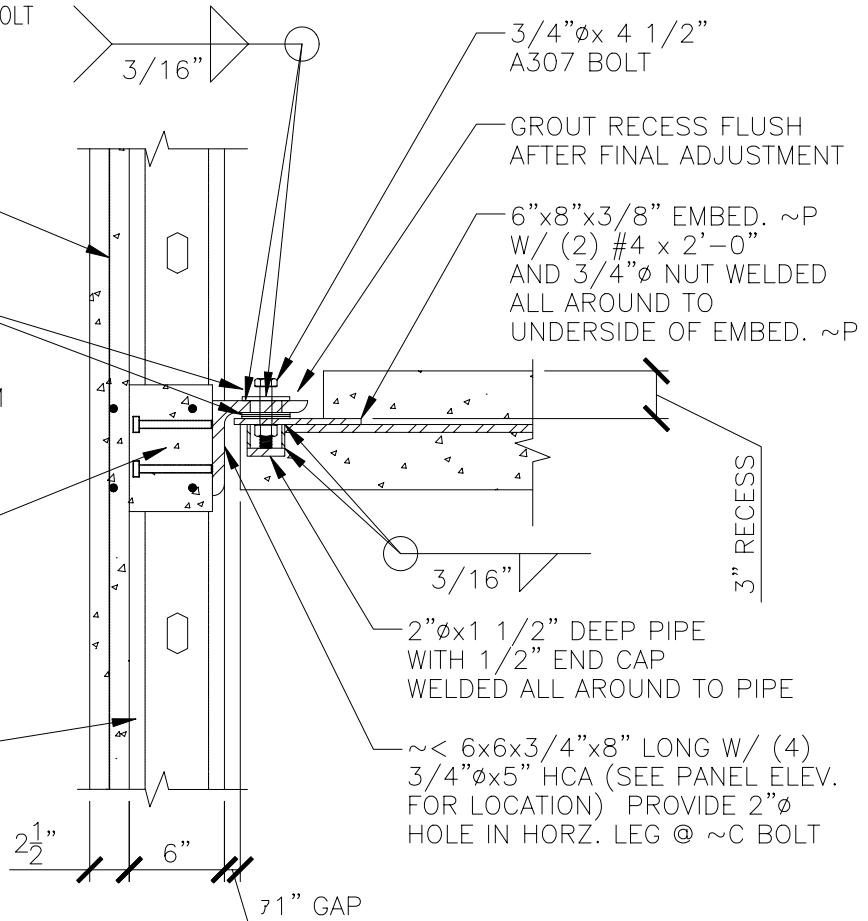
TACK WELD 1/4" PLATE WASHER AND BOLT HEAD. WELD PLATE WASHER TO L6x6 ALL AROUND AFTER FINAL ADJUSTMENT

WWF TYP. ALL PANELS

U SHAPED SHIM  
~P'S AS REQUIRED

8"x7 3/4" CONC. BOND BEAM  
W/ (4) #5 BARS CONT.  
DRILL (2) ACCESS HOLES  
IN STUDS TO ALLOW  
REBAR TO THREAD THRU

METAL STUD CRETE  
WALL PANEL



NOTE:  
FLOOR FRAMING  
(BY OTHERS) NOT SHOWN.

M.S.C. SPANDREL PANEL TO  
FLOOR CONNECTION

For further details on Metal Stud Crete<sup>®</sup> panels, contact:

**EARL COMPOSITE SYSTEMS**

(800) 796-3275, Fax (626) 796-6194

E-Mail: [metalcrete@earlcorp.com](mailto:metalcrete@earlcorp.com)

Website: [www.metalcrete.com](http://www.metalcrete.com)

