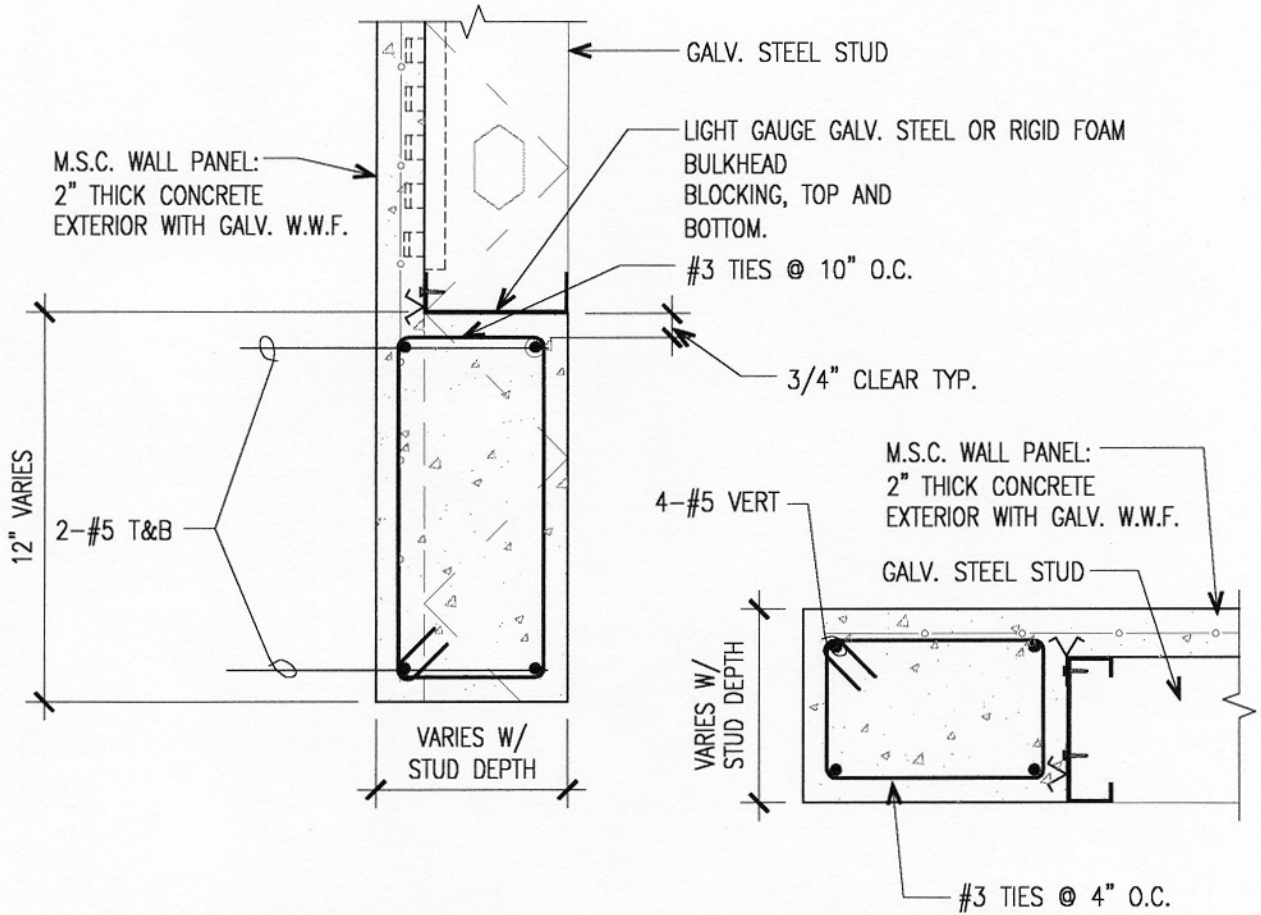


# Metal Stud Crete<sup>®</sup> Composite System



HEADER SECTION

JAMB CONDITION

## CONCRETE COLUMN AND BEAM REBAR CAGE DETAIL FOR REINFORCEMENT OF OPENINGS

1 1/2" = 1'-0"

For further details on Metal Stud Crete<sup>®</sup> panels, contact:

**EARL COMPOSITE SYSTEMS**

(800) 796-3275, Fax (626) 796-6194

E-Mail: [metalcrete@earlcorp.com](mailto:metalcrete@earlcorp.com)

Website: [www.metalcrete.com](http://www.metalcrete.com)

