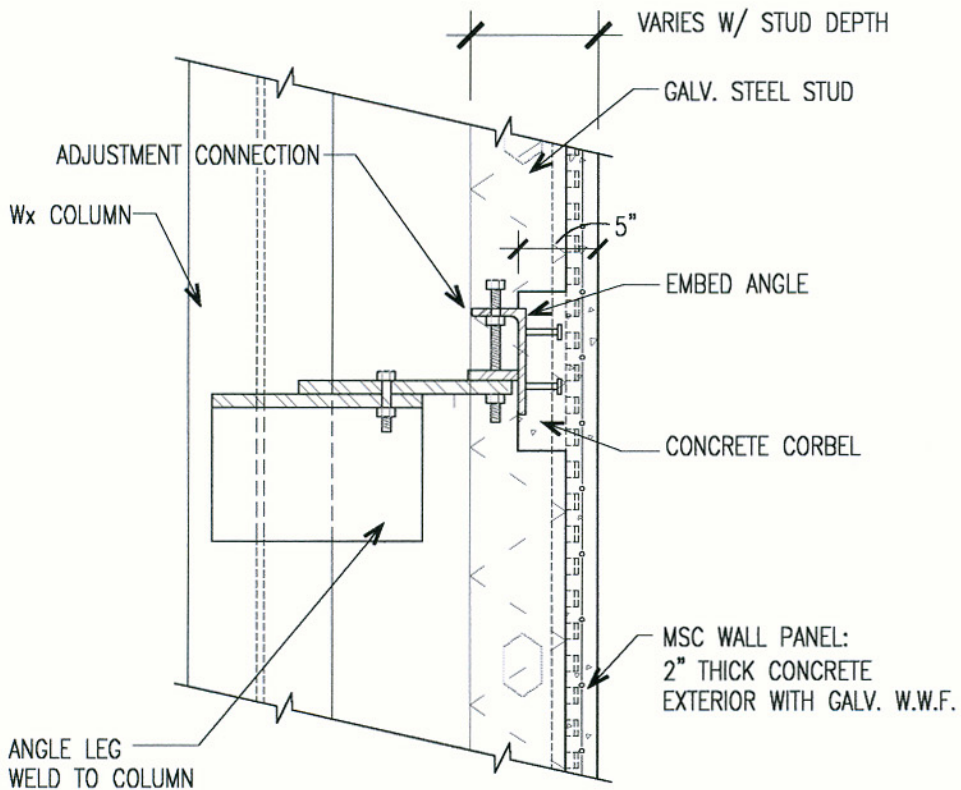


# Metal Stud Crete<sup>®</sup> Composite System



## M.S.C. PANEL DEAD LOAD BEARING CONNECTION AT EACH SIDE OF COLUMN

1" = 1'-0"

For further details on Metal Stud Crete<sup>®</sup> panels, contact:  
**EARL COMPOSITE SYSTEMS**  
(800) 796-3275, Fax (626) 796-6194  
E-Mail: [metalcrete@earlcorp.com](mailto:metalcrete@earlcorp.com)  
Website: [www.metalcrete.com](http://www.metalcrete.com)

