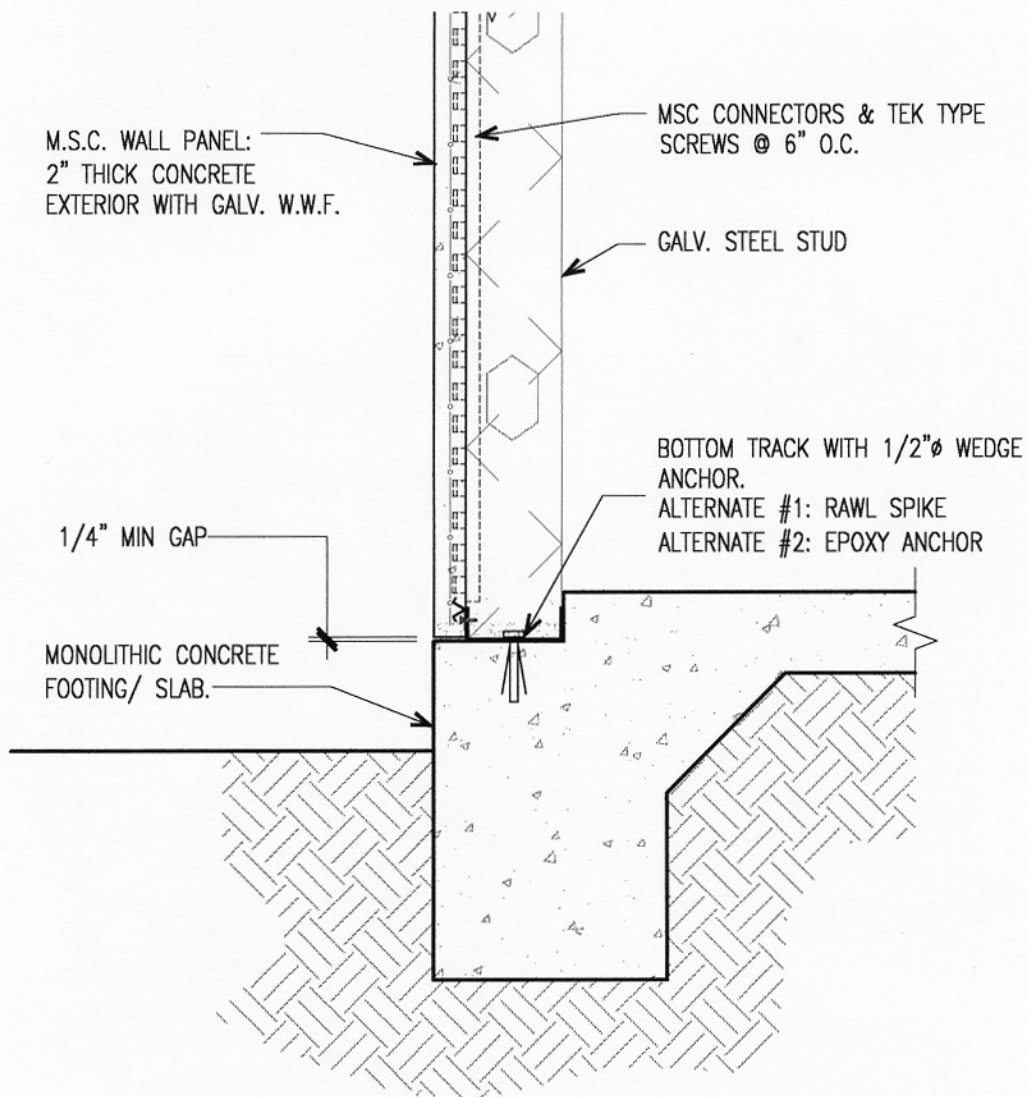


Metal Stud Crete[®] Composite System



TYPICAL M.S.C. WALL TO STEPPED FOUNDATION SLAB

1" = 1'-0"

For further details on Metal Stud Crete[®] panels, contact:
EARL COMPOSITE SYSTEMS

(800) 796-3275, Fax (626) 796-6194

E-Mail: metalcrete@earlcorp.com

Website: www.metalcrete.com

