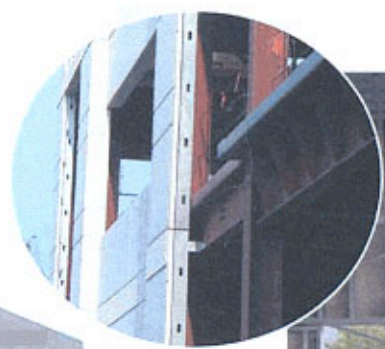


Design IDEAS

Light-Gauge Projects

Light-Gauge Steel Composite Panels Used On Campus Medical Facilities



Gary, IN—On this particular project at the Indiana University campus, two medical facilities utilized Metal Stud Crete (MSC) panels from Earl Composite Systems of Lindale, CA, as the exterior enclosure system. The MSC panels consist of thin concrete shells

attached to a light-gauge steel frame. They weigh between 30-40 lbs. per sq. ft. and don't require additional furring inside the structure.

The first phase of the project, completed in 2003, required 25,000 sq. ft. of panels, while the

second phase, completed in August 2005, used 30,000 sq. ft. of MSC. Lakelands Concrete of Lima, NY, utilized over 50,000 lineal feet of 6", 16-gauge steel during panel fabrication. The panels were then shipped over 1,000 miles to the jobsite.

The general contractor, Castle Construction of M... IL. Gary-based Pangere... installed the panels. The architect was Blackburn Architects of Indianapolis, IN.

Earl Composite Systems
 (800) 796-3275
www.metalcrete.com
 Circle #320