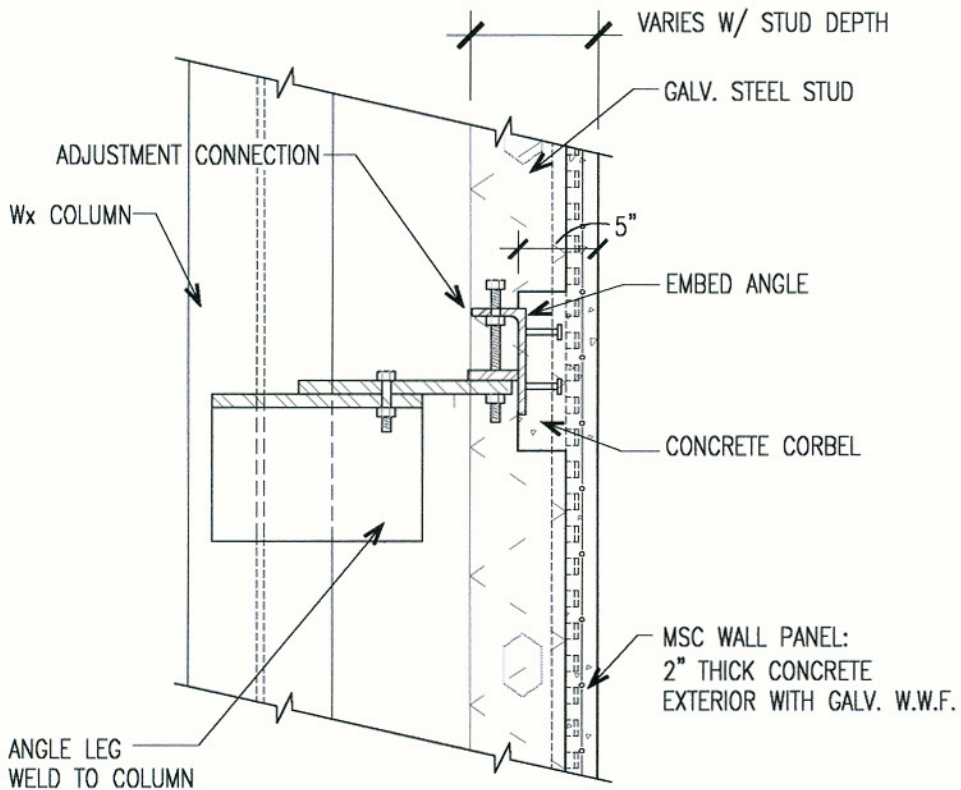


Metal Stud Crete[®] Composite System



M.S.C. PANEL DEAD LOAD BEARING CONNECTION AT EACH SIDE OF COLUMN

1" = 1'-0"

For further details on Metal Stud Crete[®] panels, contact:
EARL COMPOSITE SYSTEMS
(800) 796-3275, Fax (626) 796-6194
E-Mail: metalcrete@earlcorp.com
Website: www.metalcrete.com

