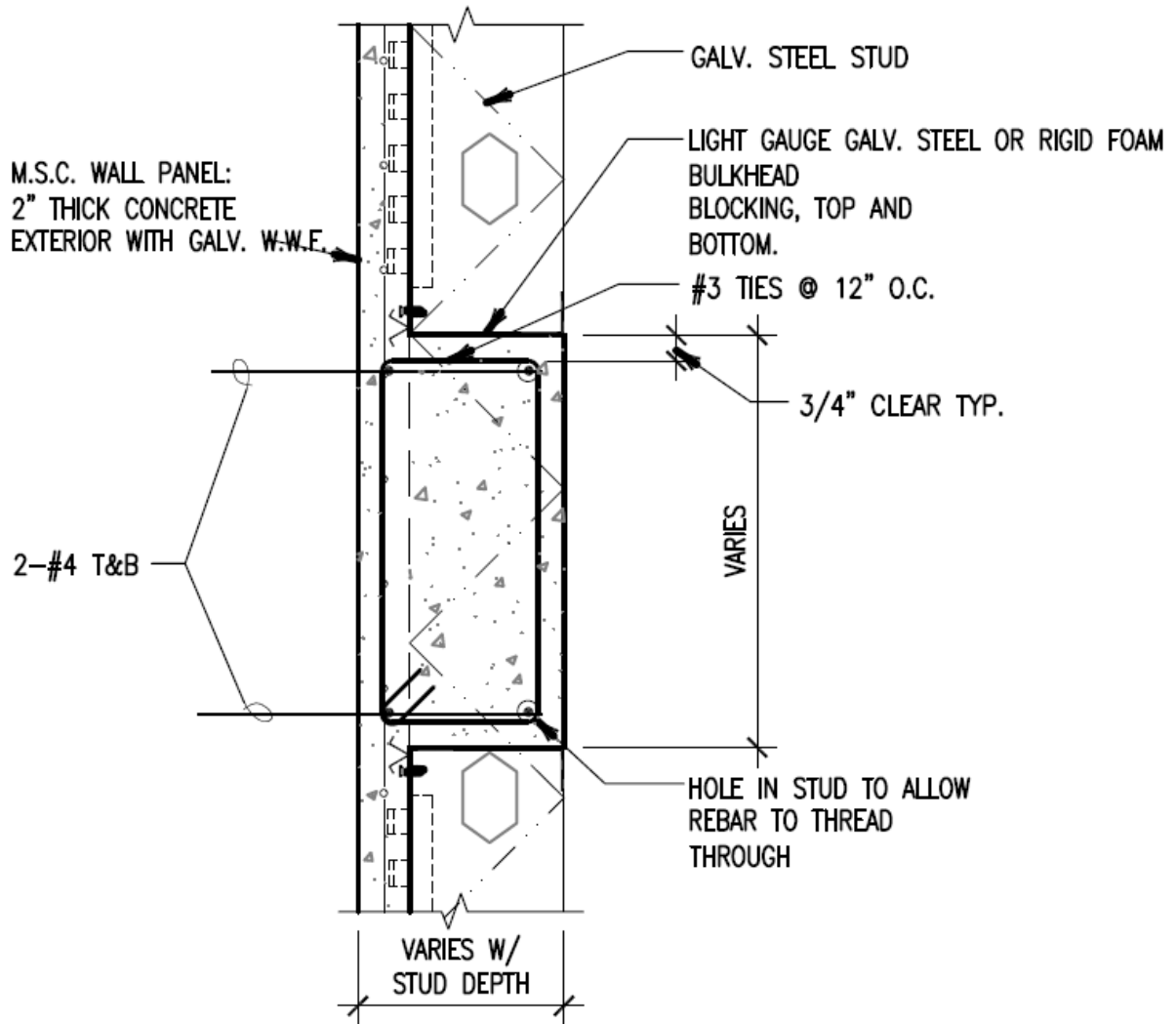


Metal Stud Crete® Composite System



M.S.C. TYPICAL CONCRETE BOND BEAM SECTION @ FLOOR OR ROOF

1 1/2" = 1' - 0"

For further details on Metal Stud Crete® contact
Composite Building Systems Inc.
E-mail: info@metalcrete.com
Website: www.metalcrete.com
Phone: (818) 606-4703