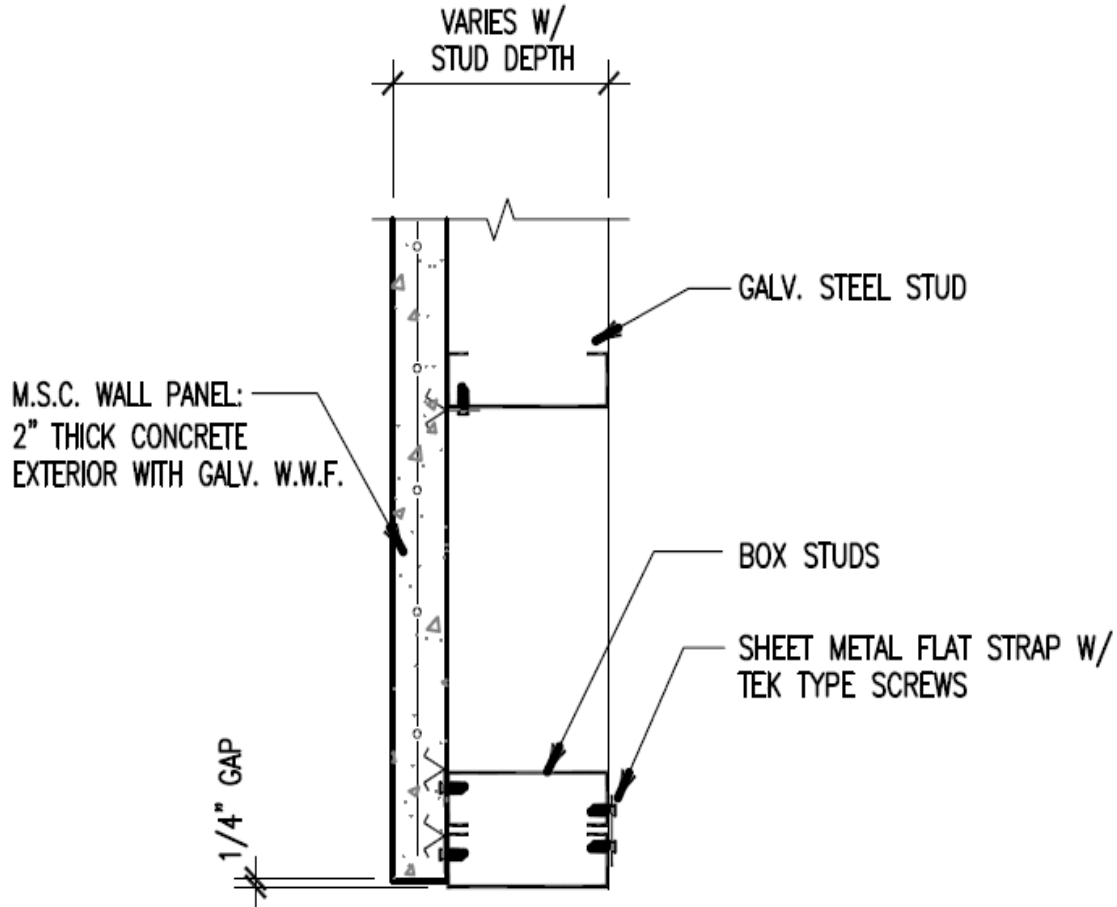


Metal Stud Crete® Composite System



M.S.C. PANEL END CONDITION WITH BOX STUDS

1 1/2" = 1' - 0"

For further details on Metal Stud Crete® contact
 Composite Building Systems Inc.
 E-mail: info@metalcrete.com
 Website: www.metalcrete.com
 Phone: (818) 606-4703